

NAFA 8Nm Spring Return Damper Actuator

2 Point Spring Return Control



NAFA series Spring Return actuators are developed for general air damper application, rotary valve and other devices which require a fail-safe function. During normal operation, the actuator motorized the device. In the event of power outage, the actuator springs back to its original position.

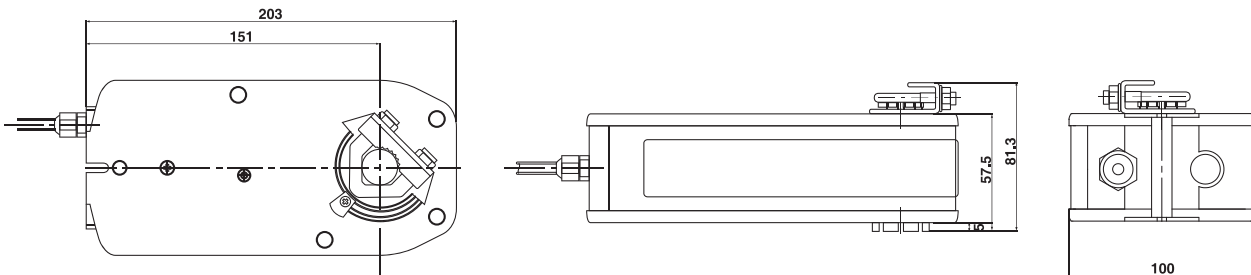
Features

- Torque 8 Nm
- Damper size 1.0 m²
- Power supply AC/DC 24V and AC 230 V
- Shaft dimensions - 11mm hexagonal
- Minimum Shaft Length 40 mm
- Adjustable angle of rotation
- Selectable direction of rotation of reversing actuator
- Actuator with 1 m cable connection
- Optional 1 Fixed and 1 Adjustable SPDT auxiliary switches

Model Selection Table

MODEL / TYPE	TORQUE	POWER SUPPLY	RUNNING TIME	AUXILIARY SWITCH
NAFA 1-08	8 Nm	AC/DC 24 V ± 10%	70...90 sec (Spring Back <25 sec)	-
NAFA 1-08S	8 Nm	AC/DC 24 V ± 10%	70...90 sec (Spring Back <25 sec)	2 x SPDT (Fixed & Adjustable)
NAFA 2-08	8 Nm	AC 230 V ± 10%	70...90 sec (Spring Back <25 sec)	-
NAFA 2-08S	8 Nm	AC 230 V ± 10%	70...90 sec (Spring Back <25 sec)	2 x SPDT (Fixed & Adjustable)

Dimensions *Unit : mm*



NAFA 8Nm

Spring Return Damper Actuator

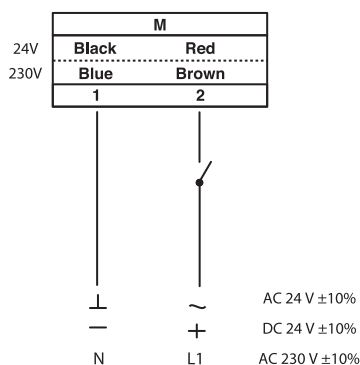
2 Point Spring Return Control

Technical Specification

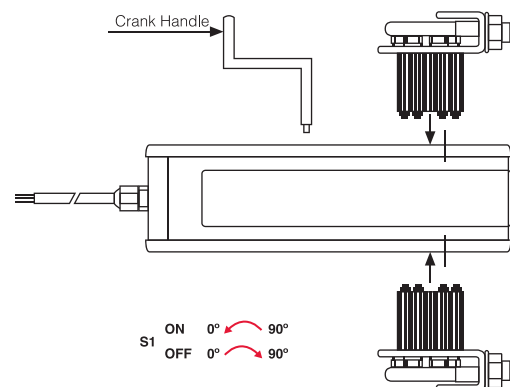
	NAFA 1-08 (S)	NAFA 2-08 (S)
Torque	8 Nm	
Damper size	1.0 m ²	
Shaft dimensions	11mm hexagonal	
Power supply	AC/DC 24 V ± 10%	AC 230 V ± 10%
Frequency	50...60 Hz	
Control Signal	2 point control	
POWER CONSUMPTION		
- Operating	7.0 W	8.0 W
- End position	2.0 W	5.5 W
For wire sizing	8.0 VA	
Electrical Connection	1 m Cable	
Auxiliary Switches Rating	3 (1.5) A, AC 250 V	
Protection Class	Class III ⚡	Class II ⚡
Angle of rotation	-5...+90° (mechanical)	
Weight	2.2 Kg	
Life cycle	60,000 rotation	
Sound level	45 dB	
IP protection	IP54	
Operating Temperature	-20°...50° as per IEC 721-3-3	
Non-Operating Temperature	-30°...+60° C / IEC 721-3-2	
Ambient Humidity	5%...95% rH non condensing / EN	
Maintenance	Maintenance Free	
Mode of Operation	Type I / EN 60730-1	
EMC	CE & ISO 9000 EN / EEC	

Wiring Diagram

WIRING DIAGRAM NAFA...08 (S)
POWER SUPPLY AC/DC 24 V / AC 230V

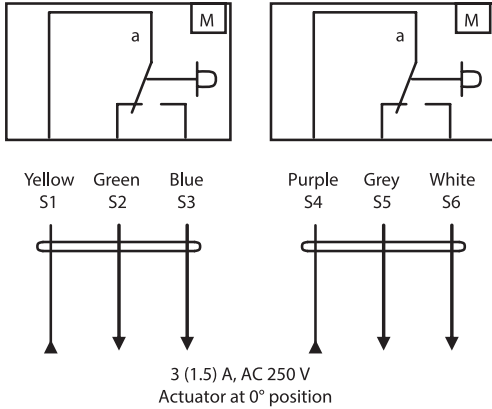


DIRECTION OF ROTATION NAFA...08 (S)



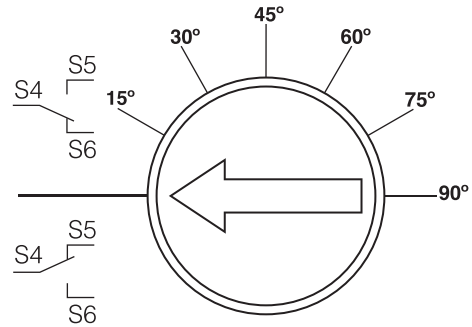
NAFA 8Nm Spring Return Damper Actuator 2 Point Spring Return Control

WIRING DIAGRAM NAFA...08 (S) AUXILIARY SWITCHES



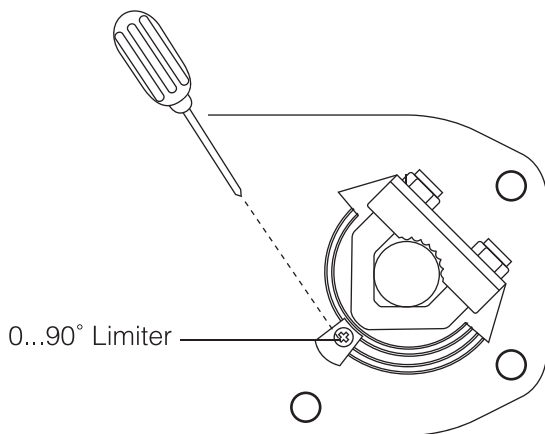
AUXILIARY SWITCHES NAFA...08 (S)

Built-in Micro Switch Adjustment (NAFA)
Move the screw of the microswitch



Switch **a** factory set at 5°
Switch **b** adjustable 0°...90°

Angle Of Rotating Limiting



Mechanical Limited Adjustment

- ① Loosen screw of the mechanical limiter plate.
- ② Move the limiter plate to the appropriate position.
- ③ Tighten the screw.

Installation / Mounting Instruction

